

# Bourdon Sensing Pr. Gauges - 250mm



**MODEL : BS25** (Dry Case)

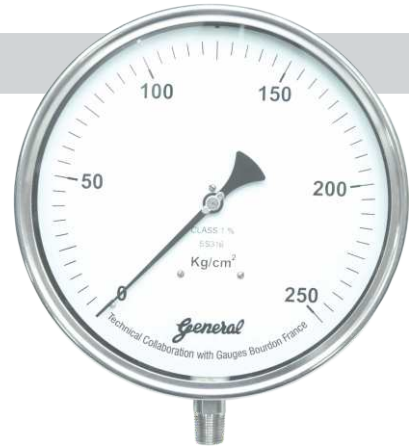
**LFBS25** (Liquid Filled Case)

**SFBS25** (Solid Front, Dry Case)

**LSBS25** (Liquid filled, Solid Front Case)

## Features

- Compliance to latest EN-837 standard
- Range : (-)1 to 1600 kg/cm<sup>2</sup>
- Bourdon in SS316 Ti as standard providing better mechanical properties guaranteeing repeatability and accuracy
- Accuracy ±1% FSD (Standard), ± 0.5% FSD on request
- Unit of measurement - kg/cm<sup>2</sup>, bar, psi, kPa, MPa



## Specifications

<b>Ref. Standard</b>	EN-837
<b>Dial</b>	250 mm in Aluminium, white background, black markings
<b>Case</b>	SS304 / SS316 with bayonet bezel
<b>Protection</b>	IP-68 (IS:13947 part I / IEC:60529)
<b>Window</b>	Safety glass (Shatter proof / Toughened glass)
<b>Bourdon</b>	SS316, SS316 Ti, SS316L, Monel
<b>Socket</b>	22mm Square in SS316, SS316 Ti, SS316L, Monel
<b>Movement</b>	SS304, SS316
<b>Range</b>	As per EN 837 (refer table) minimum span 0.6 kg/cm <sup>2</sup> , maximum 1600 kg/cm <sup>2</sup>
<b>Connection</b>	1/2" NPT (M) as standard* (other optional)
<b>Accuracy</b>	±1.0% FSD standard (±0.5% FSD on request)
<b>Over range</b>	As per EN 837
<b>Zero adjustment</b>	Micrometer Pointer
<b>Blow out disc</b>	Provided (on top)
<b>Temperature suitability</b>	Ambient (-)20°C to 60°C, Media 200°C
<b>Temperature Effect</b>	Within ±0.4% FSD/10°C, when temperature changes from reference temperature of 20°C (as per EN-837 standard)
<b>Optional</b>	IBR certification NACE compliance Liquid Filled Case External Knob for zero setting Vacuum Protection CE Atex

\* For ranges above 1000 bar, connection shall be 1/2"BSP(M) with Bottom Entry only

## Ranges

Gauge	bar, kg/cm <sup>2</sup>	Least count
Vacuum	(-)1 to 0	0.02
	-760 to 0mmHg	20
Compound	(-)1 to 0.6	0.05
	(-)1 to 1.5	0.05
	(-)1 to 3	0.10
	(-) 1 to 5	0.10
	(-)1 to 9	0.20
Pressure Gauge ('C' shaped Bourdon)	(-)1 to 15	0.50
	(-)1 to 24	0.50
	(-)1 to 39	1.0
	0 to 0.6	0.01
	0 to 1	0.02
Pressure Gauge Bourdon	0 to 1.6	0.05
	0 to 2.5	0.05
	0 to 4	0.10
	0 to 6	0.10
	0 to 10	0.20
	0 to 16	0.50
	0 to 25	0.50
	0 to 40	1.0
	0 to 60	1.0
	0 to 100	2.0
Coil type Bourdon	0 to 160	5.0
	0 to 250	5.0
	0 to 400	10.0
	0 to 600	10.0
	0 to 800	20.0
	0 to 1000	20.0
	0 to 1600	50.0

For range other than above please contact our design dept.

The parameters mentioned here are the standard specifications / values generally used for most of the process applications. Any other specification not appearing here also can be provided as per customer requirement. For higher temperature services above 100°C, we recommend to provide suitable cooling arrangement (Syphon, Cooling Tower, Impulse Tubing, Diaphragm Seal etc.)

Under Technical Collaboration with M/s. Gauges Bourdon, France

# Ordering Information

## MODEL



### BASIC MODEL CODE

- BS25** Dry Case
- LFBS25** Liquid Filled Case
- SFBS25** Solid Front, Dry Case
- LSBS25** Liquid filled, Solid Front Case

### MOUNTING

- V** Bottom Entry, Local Mounting
- S** Bottom Entry, Surface Mounting
- Y** Bottom Entry, 2" Pipe Mounting
- C** Back Entry, Local Mounting
- P** Back Entry, Flush Panel Mounting

### DIAL SIZE

**250** 250 mm

### CASE

- S4S** SS 304
- S6S** SS 316

### BOURDON

- S6S** SS 316
- S6L** SS 316L
- S6T** SS 316Ti
- MN4** Monel

### SOCKET

- S6S** SS 316
- S6L** SS 316L
- S6T** SS 316Ti
- MN4** Monel

### MOVEMENT

- S4S** SS 304
- S6S** SS 316

### CONNECTION

Conn	Code	Size	Code	Type	Code	Male/ Female	Code
Thread	T	1/4"	<b>06</b>	NPS	<b>NS</b>	Male	<b>M</b>
		3/8"	<b>10</b>	NPT	<b>NT</b>	Female	<b>F</b>
		1/2"	<b>15</b>	BSP	<b>BP</b>		
		3/4"	<b>20</b>	BSPT	<b>BT</b>		
		1"	<b>25</b>	JIS-PF	<b>PF</b>		
		M20	<b>M20</b>	JIS-PT	<b>PT</b>		
				Gas	<b>GS</b>		
				R	<b>RR</b>		
		Rp	<b>RP</b>				
		Pitch 1.5	<b>C</b>				

e.g. For 1/2"NPT(M), Code: **T15NTM**  
 For M20x1.5 (F), Code: **TM20CF**

### OPTION

- A05** Accuracy  $\pm 0.5\%$ FSD
- ATX** Atex
- BGS** Built In Gauge Saver
- BOB** Blow out disc at back
- BSN** Built In Snubber
- CLB** Colour Band
- CEM** CE marking
- DC2** Silicone Oil filled Case
- DUS** Dual Scale
- EXZ** External Knob for Zero Adjustment
- FLG** Flanged Process Conn
- GLY** Glycerine filled Case
- IBR** IBR
- NAC** NACE
- OXY** O2 Cleaning
- OR5** 150% FSD Over range
- VCP** Vac protection
- L** Nil
- CSU** Chemical Seal
- ACC** Accessory
- XXX** Other

### UNIT

- KSC** kg/cm2(g)
- BAR** bar(g)
- PSI** psi(g)
- KPA** kPa(g)
- MPA** MPa(g)
- MBR** mbar(g)
- MMW** mm WC(g)
- CMW** cm WC(g)
- MWC** m WC(g)
- INW** inch WC(g)
- MMH** mm Hg(g)
- CMH** cm Hg(g)
- INH** inch Hg(g)
- XXX** Other (Please specify)

### RANGE

Please select from Table

### FLG - FLANGE

Conn	Code	Size	Code	Rating#	Code	Facing	Code
Flange	<b>F</b>	1/2"	<b>15</b>	150	<b>A</b>	RF	<b>RF</b>
		3/4"	<b>20</b>	300	<b>B</b>	FF	<b>FF</b>
		1"	<b>25</b>	600	<b>C</b>	RTJ	<b>RJ</b>
		1-1/2"	<b>40</b>	900	<b>D</b>	LT	<b>LT</b>
		2"	<b>50</b>	1500	<b>E</b>	LG	<b>LG</b>
		3"	<b>80</b>	2500	<b>F</b>		

e.g. For 40 NB 300# RF flange, Model Code: **F40BRF**

Sample Model Code: **BS25-V-250-S4S-S6S-S6S-S4S-T15NTM-(0-10)-KSC-L**