

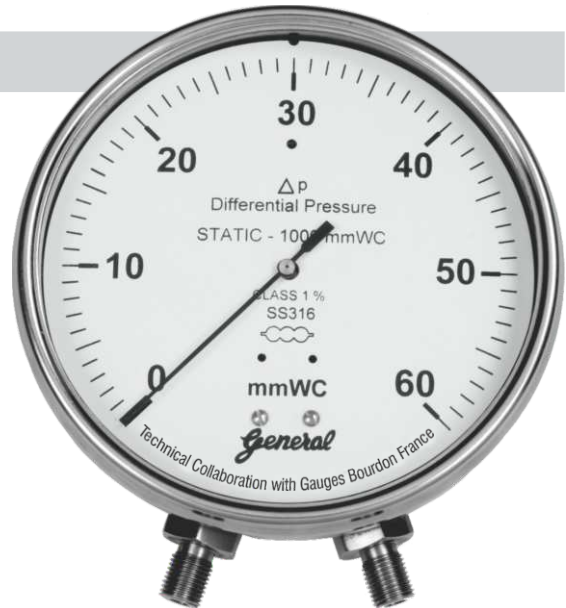
Differential Pr. Gauges-Capsule Type

General

MODEL : DPCP

Features

- Low differential pressure measurement with high accuracy
- Sensing element- Capsule in SS316L
- Screwed connection
- Accuracy $\pm 1\%$ FSD
- General stainless steel capsule differential pressure gauges are designed for measuring small differential pressures on clean & dry air or gas system



Specifications

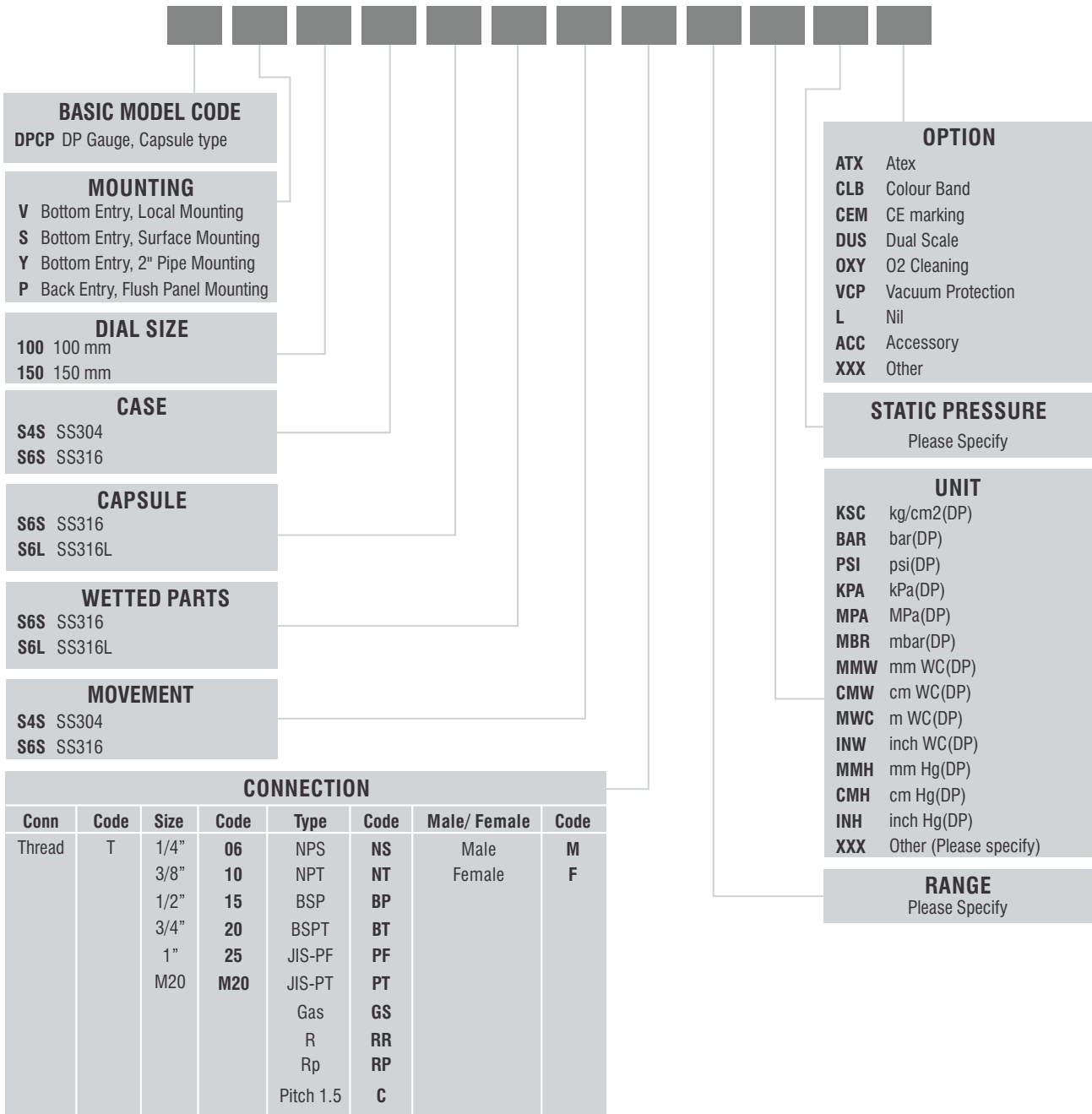
Dial	100 mm / 150 mm, Aluminium, white background, black markings
Case	SS304 / SS316 with bayonet bezel
Protection	Weatherproof to IP-68 (IS:13947 part I / IEC:60529)
Window	Safety glass (Shatter proof / Toughened glass)
Sensing	Capsule in SS316, SS316L
Connection	½ " NPT (M) as standard (other on request)
Range	Any range between 0 to 60 mm WC to 0 to 1000 mmWC
Static Pressure	10 times the range (Maximum)
Accuracy	$\pm 1\%$ FSD
Temperature Suitability	Ambient (-)20°C to 60°C, Media 80°C
Note	Capsule type DP Gauges are recommended for non-corrosive, clean, clear (colourless) & dry Gases / Air only
Optional	CE Atex

The parameters mentioned here are the standard specifications / values generally used for most of the process applications. Any other specification not appearing here also can be provided as per customer requirement.

Under Technical Collaboration with M/s. Gauges Bourdon, France

Ordering Information

MODEL



e.g. For 1/2"NPT(M), Code: **T15NTM**
 For M20x1.5 (F), Code: **TM20CF**

Sample Model Code: **DPCP-S-150-S4S-S6S-S6S-S4S-T15NTM-(0-60)-MMW-500mmWC.g-L**