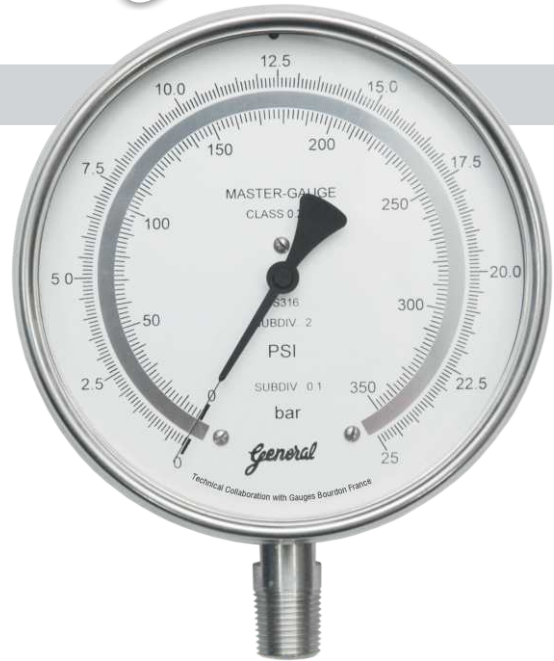


Master Pressure Gauges

MODEL : MAPG

Features

- Accuracy class $\pm 0.25\%$ FSD
- Rugged construction
- 1.2 fold over range capability for short duration
- Traceability to National / International Standard / Laboratory
- Special carrying case (Wooden Box) with each Gauge



Specifications

Ref. Standard	EN 837
Normal size	150 mm / 250 mm
Case & Bezel	SS304 / SS316, Weather proof to IP-68
Dial	Anti parallax mirror type, white, with black markings.
Window	Instrument glass
Pointer	Balanced knife edge
Measuring element	Bourdon in SS316 Ti
Movement	Precision brass, jewel bearings
Connection	1/2" NPT (M), bottom or back eccentric in SS316
Range	Refer table
Scale	bar(g), kg/cm ² (g), psi(g)
Accuracy	$\pm 0.25\%$ FSD
Over range	1.2 times maximum rating for short duration
Temperature suitability	Ambient (-)20°C to 60°C, Media 60°C
Temperature Effect	Within $\pm 0.25\%$ FSD/10°C, when temperature changes from reference temperature of 20°C
Option	CE Atex
	Pressure Comparator
	Pressure Comparator consists of a hand operated Screw Pump, Reservoir for filling the System, Shut- off / Relieve Valves. Fluid Pressure is generated by operating the Screw Pump; and the pressure is made available at two test ports - one for Master Gauge and the other for the Gauge under Test. After testing the pressure is released using Relief Valve. It is easy to operate and provides maintenance free operation.
	Pointer Puller Fixer kit

Ranges

Range	least Count	
	bar, kg/cm ²	150 mm 250 mm
(-)1 to 0	0.005	0.005
(-)760 to 0mmHg	5	5
(-)1 to 0.6	0.01	0.005
(-)1 to 1.5	0.02	0.01
(-)1 to 3	0.02	0.02
(-) 1 to 5	0.05	0.02
(-)1 to 9	0.05	0.05
(-)1 to 15	0.1	0.05
(-)1 to 24	0.2	0.1
(-)1 to 39	0.2	0.2
0 to 1	0.005	0.005
0 to 1.6	0.01	0.005
0 to 2.5	0.02	0.01
0 to 4	0.02	0.02
0 to 6	0.05	0.02
0 to 10	0.05	0.05
0 to 16	0.1	0.05
0 to 25	0.2	0.1
0 to 40	0.2	0.2
0 to 60	0.5	0.2
0 to 100	0.5	0.5
0 to 160	1.0	0.5
0 to 250	2.0	1.0
0 to 400	2.0	2.0
0 to 600	5.0	2.0

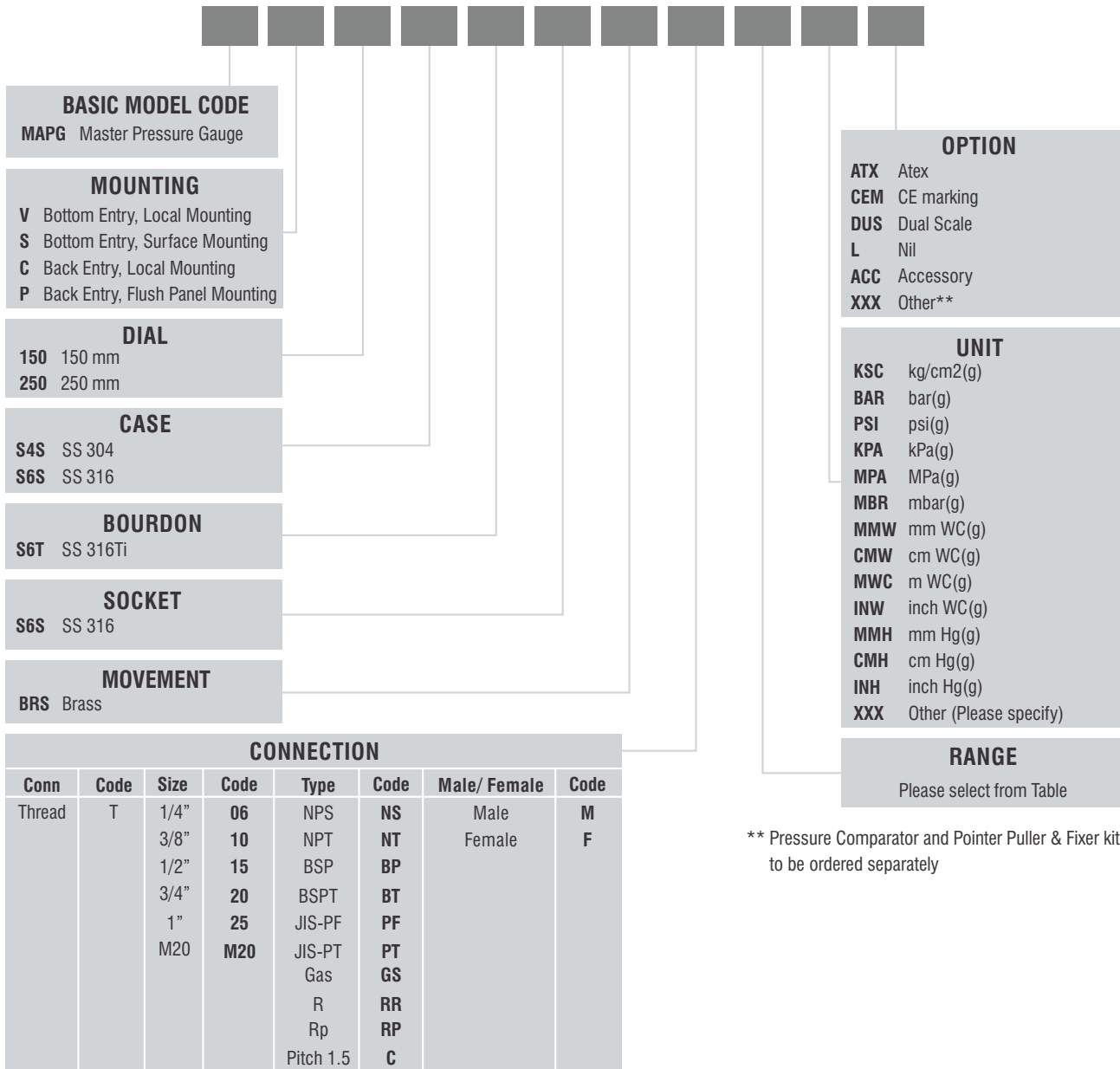
For range other than above please contact our design dept.

The parameters mentioned here are the standard specifications / values generally used for most of the Calibration Lab requirements. Any other specification not appearing here also can be provided as per customer requirement.

Under Technical Collaboration with M/s. Gauges Bourdon, France

Ordering Information

MODEL



e.g. For 1/2"NPT(M), Code: **T15NTM**
For M20x1.5 (F), Code: **TM20CF**

** Pressure Comparator and Pointer Puller & Fixer kit to be ordered separately

Sample Model Code: **MAPG-V-150-S4S-S6T-S6S-BRS-T15BPM-(0-25)-BAR-L**