

## Two Valve (three-way) Manifold for Pressure Instruments

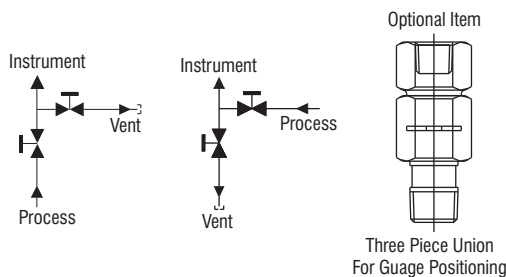
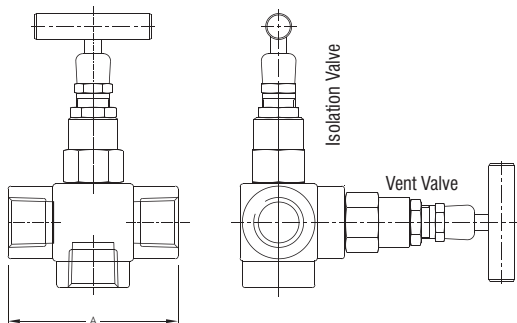
# General

### Model No. G2VM1

Two valve manifold is designed in a single block with female screwed inlet and outlet ports combining isolation valve and calibration / vent valve. Generally used on static pressure transmitters, switches and gauges.



### Description



<b>Test Pressure</b>	@ 25°C Room Temperature Hydrostatic : Body - 415 bar(g) Seat - 415 bar(g) Pneumatic : Seat - 7 bar(g)
<b>Gland Packing</b>	PTFE : Standard Graphoil : Temperatures above 200°C
<b>Material</b>	A105, A 479 304, A 479 316, A182 GR F 316, Monel, Hastelloy, Duplex
<b>Finish Option</b>	CS zinc plated. SS Natural Drain Plug. Three piece union for gauge positioning

PROCESS PORT	GAUGE PORT	DRAIN PORT	A
1/2" NPT(F)	1/2" NPT(F)	1/4" NPT(F)	65
1/2" NPT(F)	1/2" NPT(F)	1/2" NPT(F)	65
3/4" NPT(F)	3/4" NPT(F)	3/4" NPT(F)	65
1/2" BSP(F)	1/2" BSP(F)	1/2" BSP(F)	65
1/2" NBSW	1/2" NPT(F)	1/2" NPT(F)	65
3/4" NBSW	1/2" NPT(F)	1/2" NPT(F)	65

#### Angle Type II

GAUGE INLINE WITH DRAIN/VENT AND PROCESS AT RIGHT ANGLE			
1/2" BSP(F)	1/2" NPT(F)	1/2" NPT(F)	65
3/4" NPT(F)	3/4" NPT(F)	3/4" NPT(F)	65
1/2" NBSW	1/2" NPT(F)	1/2" NPT(F)	65
3/4" NBSW	1/2" NPT(F)	1/2" NPT(F)	65

**Note:** Drawings, Dimensions and other information are subject to change without notice, as a part of our continues research and development.

## Two Valve Manifold

*General*

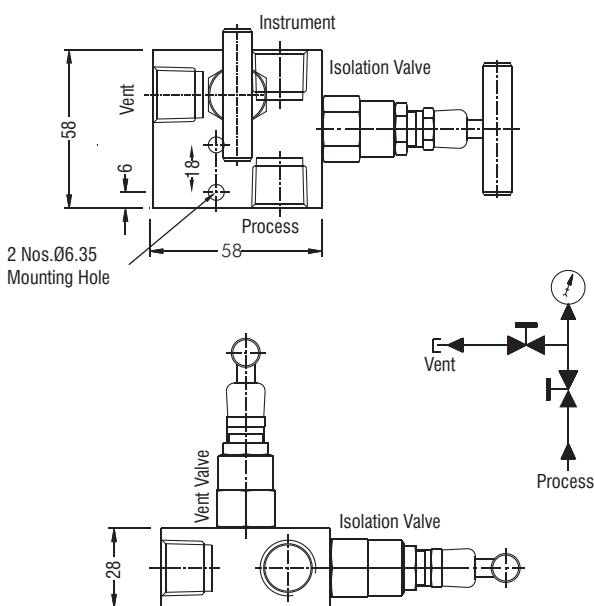
### Model No. G2VM2

Two valve manifold is designed in a single block with female screwed inlet and outlet port combining isolation valve and calibration / vent valve. Generally used on static pressure transmitters, switches or gauges.



Vent valve on top and isolation valve on side

## Description



<b>Connections</b>	Process : 1/2" NPT (F) Instrument : 1/2" NPT (F) Drain/Vent : 1/4" NPT (F), (1/2" NPT (F) optional)
<b>Test Pressure</b>	@ 25°C Room Temperature Hydrostatic : Body - 415 bar(g) Seat - 415 bar(g) Pneumatic : Seat - 7 bar(g)
<b>Gland Packing</b>	PTFE : Standard GRAPHOIL : Temperatures above 200°C
<b>Material</b>	A 105, A 182 / A 479 GR F 304, A 182 / A 479 GR F316, Monel, Hastelloy, Duplex
<b>Finish</b>	CS zinc plated. SS Natural
<b>Option</b>	Drain Plug. Three piece union for gauge positioning
<b>Accessory</b>	Mounting Bolts - IS : 1364 - 1960 - 2 Nos

**Note:** Also available with BSP and BSP taper threads.

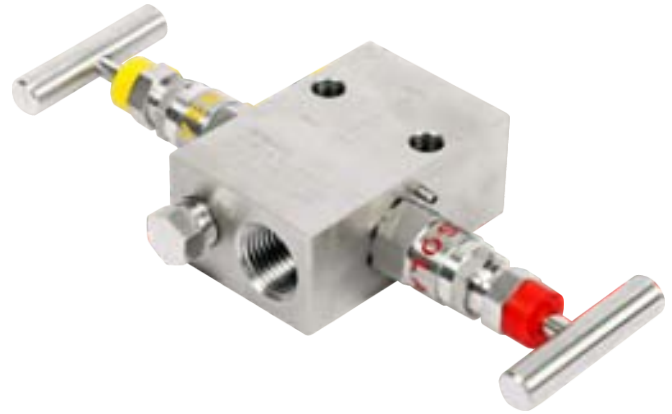
**Note:** Drawings, Dimensions and other information are subject to change without notice, as a part of our continues research and development.

## Two Valve Manifold

*General*

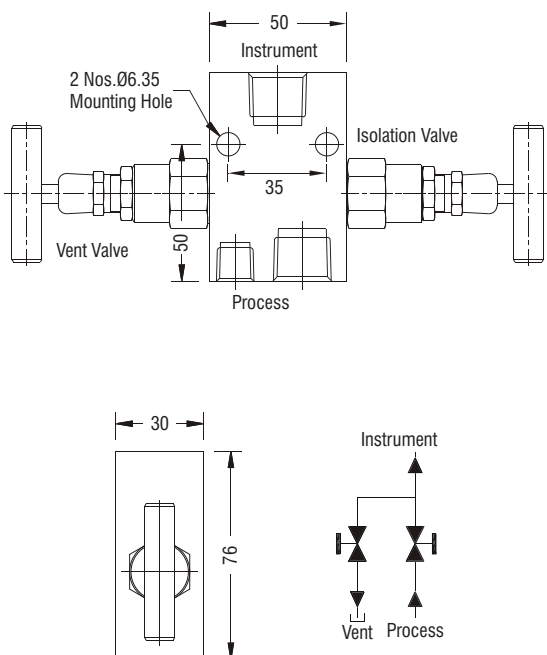
### Model No. G2VMPTM1

Two valve manifold is designed in a single block with female screwed inlet and outlet port combining isolation valve and vent / calibration valve. Generally used on static pressure transmitters, switches or gauges.



**Isolation & vent valve opposed and drain on process side**

## Description



<b>Connections</b>	Process : 1/2" NPT (F) Instrument : 1/2" NPT (F) Drain/Vent : 1/4" NPT (F)
<b>Test Pressure</b>	@ 25°C Room Temperature Hydrostatic : Body - 415 bar(g) Seat - 415 bar(g) Pneumatic : Seat - 7 bar(g)
<b>Gland Packing</b>	PTFE : Standard GRAPHOIL : Temperatures above 200°C
<b>Material</b>	A 105, A 182 / A 479 GR F 304, A 182 / A 479 GR F 316, Monel, Hastelloy, Duplex
<b>Finish</b>	CS zinc plated. SS Natural
<b>Option</b>	Drain Plug. Three piece union for gauge positioning
<b>Accessory</b>	Mounting Bolts - IS : 1364 - 1960

**Note:** Also available with BSP and BSP taper threads.

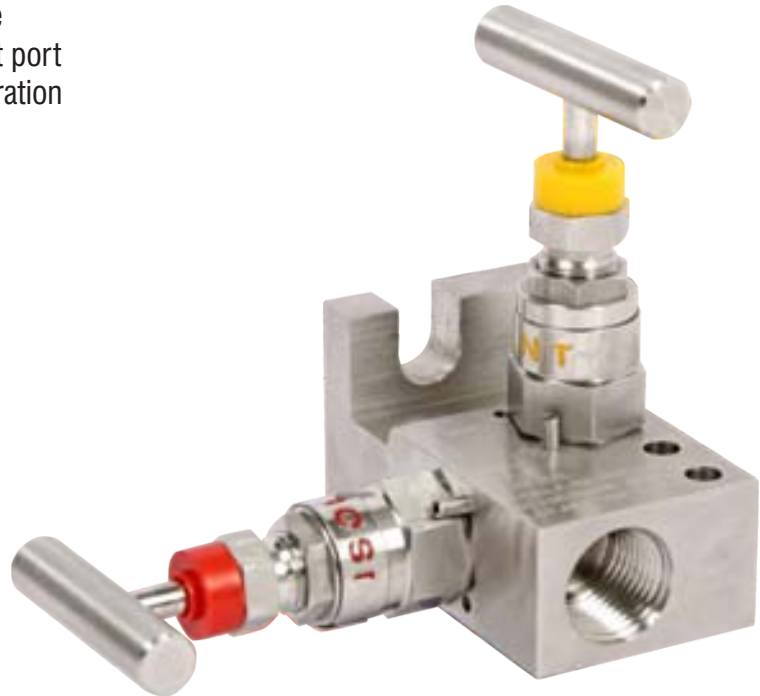
**Note:** Drawings, Dimensions and other information are subject to change without notice, as a part of our continues research and development.

## Two Valve "T" Type Manifold for Pressure Instruments

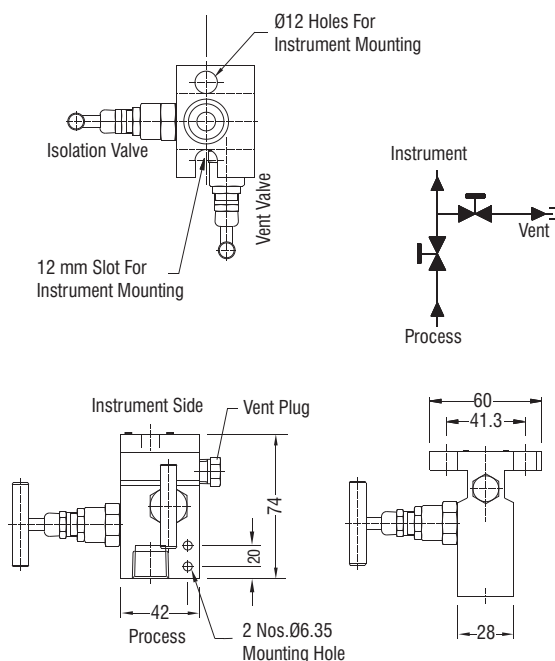
*General*

### Model No. G2VMPF1

Two valve manifold is designed in a single block with female screwed inlet and outlet port combining isolation valve and vent / calibration valve. Generally used on static pressure transmitters, switches or gauges.



### Description



<b>Connections</b>	Process : 1/2"NPT (F) Instrument : Flanged Drain/Vent : 1/4"NPT (F)
<b>Test Pressure</b>	@ 25°C Room Temperature Hydrostatic : Body - 415 bar(g) Seat - 415 bar(g) Pneumatic : Seat - 7 bar(g)
<b>Gland Packing</b>	PTFE : Standard GRAPHOIL : Temperatures above 200°C
<b>Material</b>	A 105, A 182 GR F 304, A 182 GR F 316, Monel, Hastelloy, Duplex
<b>Finish</b>	CS zinc plated. SS Natural
<b>Option</b>	Drain Plug
<b>Accessory</b>	Mounting Bolts - IS : 1364 - 1960 - 2 Nos Interface seal - PTFE / VITON - 1 Nos

**Note:** Also available with BSP and BSP taper threads.

**Note:** Drawings, Dimensions and other information are subject to change without notice, as a part of our continues research and development.