

## Three Valve Manifold, Separately Mounted

*General*

### Model No. G3VMPP1

Designed for applications to facilitate remote mounting of differential pressure instruments. Dimensions shown above are for the standard 54 mm or 2 1/8 inch instrument connection. Centre distance found in majority of instruments.

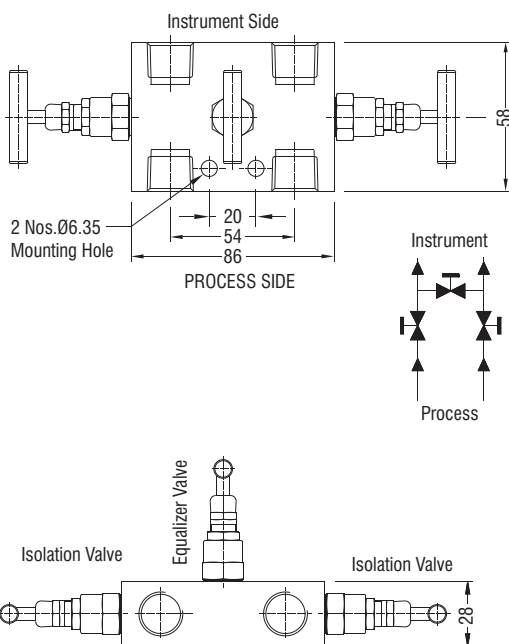
The manifold is also available for instruments with other centre distances for instrument connections (as 55 mm, 56 mm and 57 mm) but dimensions shown will vary.

Please consult us for these dimensions.  
Useful for installations in remote fields eliminating conventional method of piping.



**Valve on three sides  
with screwed connections**

## Description



<b>Connections</b>	Process : 1/2"NPT (F) Instrument : 1/2"NPT (F) Drain/Vent : 1/4"NPT (F)(Optional)
<b>Test Pressure</b>	@ 25°C Room Temperature Hydrostatic : Body - 415 bar(g) Seat - 415 bar(g) Pneumatic : Seat - 7 bar(g)
<b>Gland Packing</b>	PTFE : Standard GRAPHOIL : Temperatures above 200°C
<b>Material</b>	A 105, A 182 GR F 304, A 182 GR F 316, Monel, Hastelloy, Duplex
<b>Finish</b>	CS zinc plated. SS Natural
<b>Option</b>	Drain Port on instrument side with drain plug (Dimension 58 becomes 76) Test Port on process side with plug
<b>Accessory</b>	Mounting Bolts - IS : 1364 - 1960 - 2 Nos

**Note:** Also available with BSP and BSP taper threads.

**Note:** Drawings, Dimensions and other information are subject to change without notice, as a part of our continues research and development.

## Three Valve Manifold, Direct Mounting

*General*

### Model No. G3VMPF2

Designed for direct mounting on to standard differential pressure transmitters. This manifold block incorporates three valves, two main process isolation valves and one equalising valve.

This design is suitable where the straight valve may foul with the instrument and to provide ease of operation.

Dimensions shown are for the standard 54 mm or 2 1/8 inch instrument connection Centre distance found in majority of instruments.

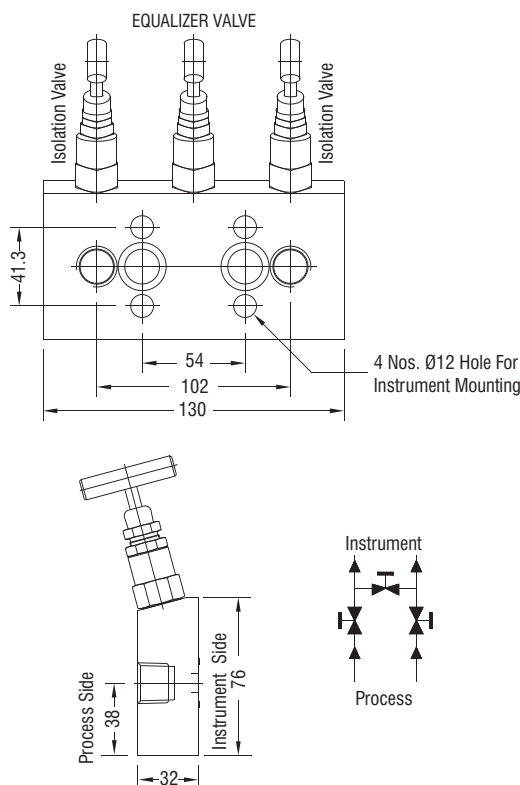
The manifold is also available for instruments with other centre distances for instrument connections (as 55 mm, 56 mm and 57 mm) but dimensions shown will vary.

Please consult factory for these dimensions.



All valves on top, screwed process connections

## Description



<b>Connections</b>	Process : 1/2" NPT (F) Instrument : Flanged Drain/Vent : 1/4" NPT (F) (Optional)
<b>Test Pressure</b>	@ 25°C Room Temperature Hydrostatic : Body - 451 bar(g) Seat - 415 bar(g) Pneumatic : Seat - 7 bar(g)
<b>Gland Packing</b>	PTFE : Standard GRAPHOIL : Temperatures above 200°C
<b>Material</b>	A 105, A 182 / A 479 GR F 304, A 182 / A 479 GR F316, Monel, Hastelloy, Duplex
<b>Finish</b>	CS zinc plated. SS Natural
<b>Option</b>	Drain Port on instrument side with drain plug Test Port on process side with plug.
<b>Accessory</b>	Mounting Bolts - IS : 1364 - 1960 - 4 Nos Interface seal - PTFE / VITON - 2 Nos

**Note:** Also available with BSP and BSP taper threads.

**Note:** Drawings, Dimensions and other information are subject to change without notice, as a part of our continued research and development.

## Three Valve Manifold, Direct Mounting - T Type

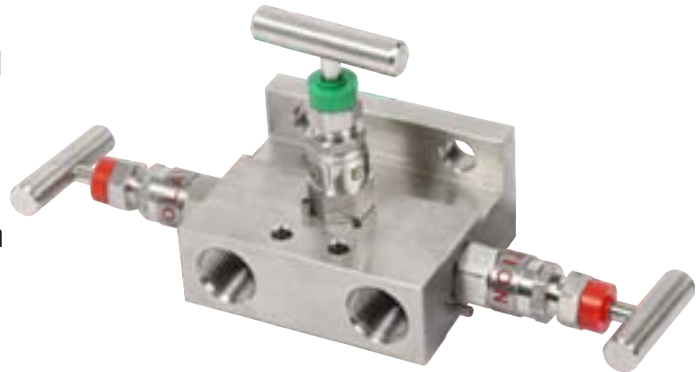
*General*

### Model No. G3 VMPF1

Designed for direct mounting on to standard differential pressure transmitters. This manifold block incorporates three valves, two main process isolation valves and one equalising valve.

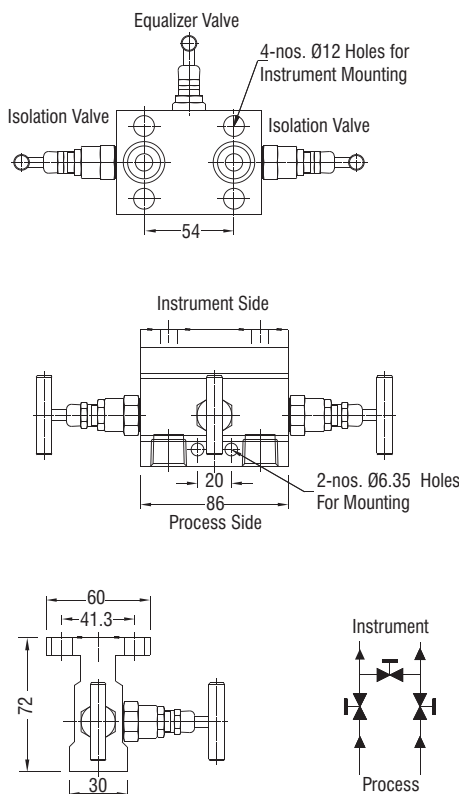
Dimensions shown are for the standard 54 mm or 2 1/8 inch instrument connection Centre distance found in majority of instruments. The manifold is also available for instruments with other centre distances for instrument connections (as 55 mm, 56 mm and 57 mm) but dimensions shown will vary.

Please consult us for these dimensions.



**Screwed process and flanged instrument connection**

## Description



<b>Connections</b>	Process : 1/2" NPT (F) Instrument : Flanged Drain/Vent : 1/4" NPT (F) (Optional)
<b>Test Pressure</b>	@ 25°C Room Temperature Hydrostatic : Body - 415 bar(g) Seat - 415 bar(g) Pneumatic : Seat - 7 bar(g)
<b>Gland Packing</b>	PTFE : Standard GRAPHOIL : Temperatures above 200°C
<b>Material</b>	A 105, A 182 GR F 304, A 182 GR F 316, Monel, Hastelloy, Duplex
<b>Finish</b>	CS zinc plated. SS Natural
<b>Accessories</b>	Two PTFE seal ring and four 7/16" UNF HI Steel mounting bolts available on request
<b>Mounting Kit</b>	Mounting bracket with U bolts and necessary kits for fitting on 2" NB stanchion pipe stand or wall mount. (to be ordered separately)
<b>Option</b>	Drain Port on instrument side with drain plug Test Port on process side with plug
<b>Accessory</b>	Mounting Bolts - IS : 1364 - 1960 - 4 Nos Interface seal - PTFE / VITON - 2 Nos

**Note:** Also available with BSP and BSP taper threads.

**Note:** Drawings, Dimensions and other information are subject to change without notice, as a part of our continues research and development.